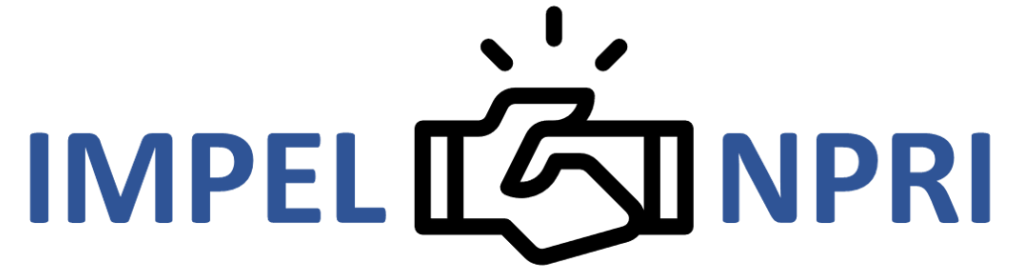




European Union Network for the
Implementation and Enforcement
of Environmental Law



**National Peer Review Initiative (NPRI) Project Online Seminar
20th December 2021**

National Peer Review Initiative: A way to empower people

Anabela Rebelo (Portugal)

NARROW THE SCOPE

- **National organization**
- **5 River Basin District Administrations**
 - RBMP application
 - Water resources uses permitting
 - A single platform to deliver permit
 - Wastewater discharge permits
 - Several challenges
 - Water bodies status
 - Small country but with asymmetries from north to south
 - Different discharge patterns
 - Different considerations on issuing permits



- **Scope: Review discharge permitting**
Scientific/Technical process to harmonize procedures

REASONS FOR THIS OPTION OF NPRI

Linking between several pieces of legislation

EU & PT Legislation: Need of better comprehension on how to apply several requirements

Scientific-Technical assessment

Specific requirement to protect water bodies (from risk of deterioration): E.g., combined approach to deliver specific ELV; Risk assessment

Country level

Several asymmetries: different land use, different water availability, different levels of knowledge at regional level

IT National system

Same information system to deliver customized permits
Different technical specifications are often use for similar situations

New business areas

New water uses (e.g. H₂ production) where current specifications may not be applied

Compliance (EU legislation)

Different procedures can be applied to similar situations through the country, which may disrupt in certain situations the environmental compliance goals, and subsequently may jeopardize the effective purposes of permits

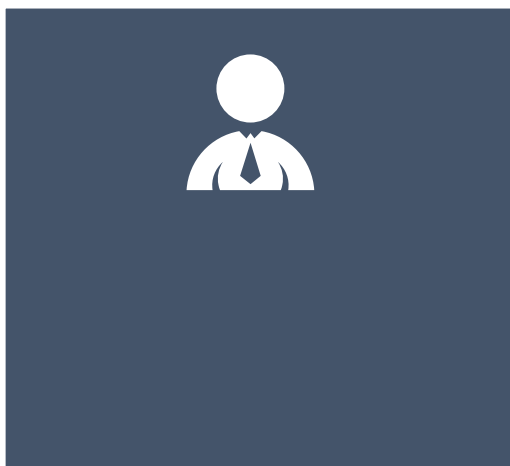
IMPORTANCE OF THE WORK

- **Court of Justice of the European Union**



- **Case C-461/13: Member States are required (unless a derogation provided for by the directive is granted) to refuse authorization for an individual project where it may cause a deterioration of the status of a body of surface water or where it jeopardises the attainment of good surface water status or of good ecological potential and good surface water chemical status by the date laid down by the directive**
- **Case C-535/18: Article 4 of WFD must be interpreted as precluding a situation where it is only after a project has been approved that the competent authority carries out the checks to establish whether the requirements laid down in that framework have been met, including the requirement to prevent the deterioration in the status of bodies of water**

PLANS FOR NPRI

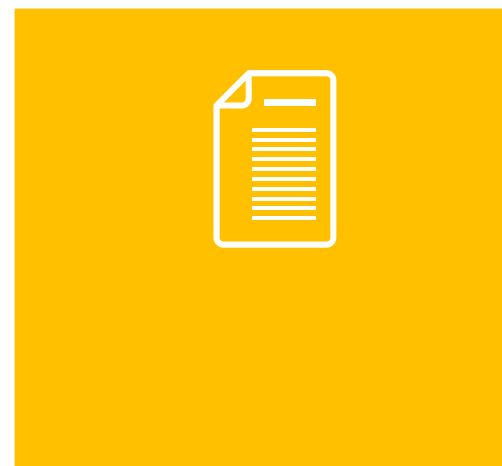


Formal agreement
from Board

ToR & Assemble a
team



Virtual meetings &
knowledge exchange
– Mutual learning)



Training (what is it a
NPRI, how to
apply...) &
questionnaires
(collection of
information)



Final workshop (live)
& presentation of
report (guidance
document to Board
for agreement)

NOT AUDITING OR ACCREDITATION PROCESS

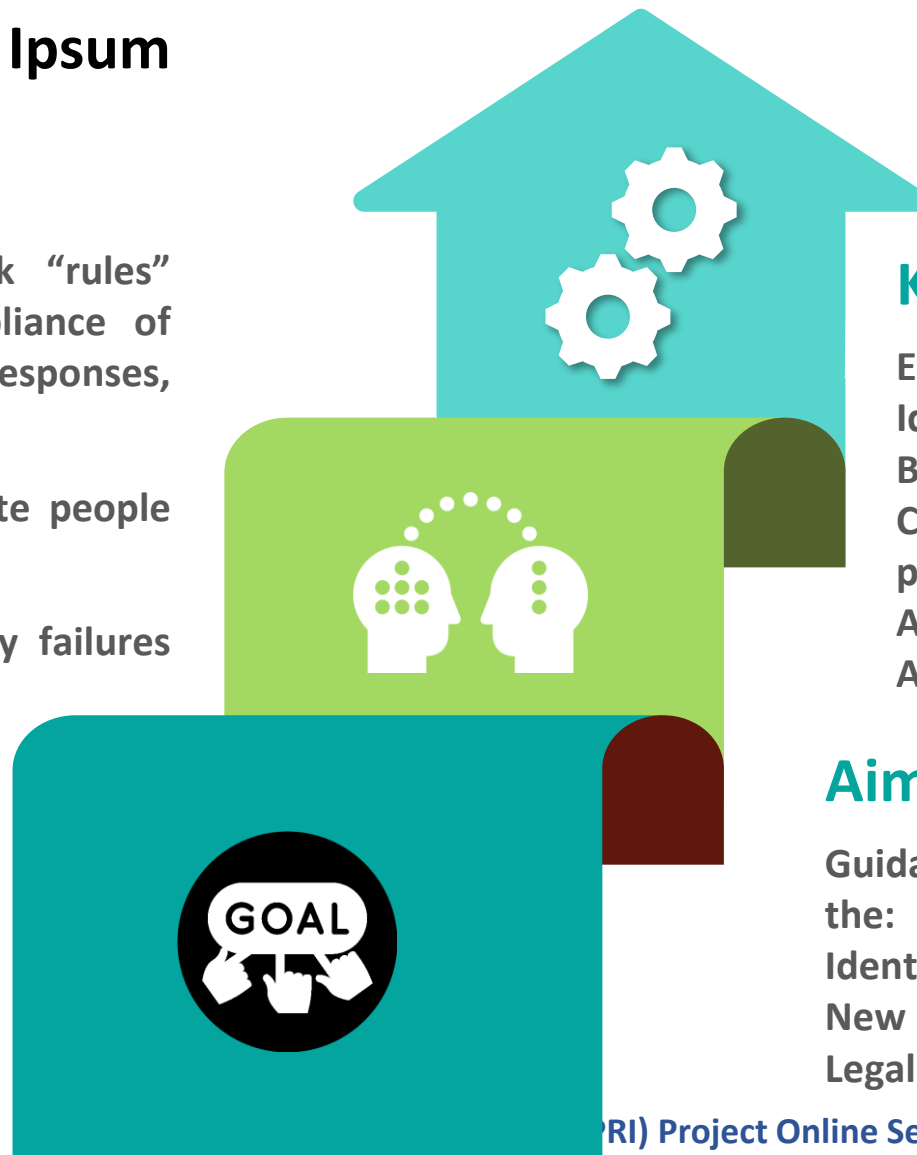
Lorem Ipsum

Not intended

Does not intend check “rules” compliance (e.g.: compliance of command chain, time responses, etc.)

Does not intend evaluate people performance

Does not intend identify failures or errors



Practices

Assessment of procedures to find best/most valuable practices

Identify unnecessary/not useful procedures

Promotes a continuous improvement

Identify where/when/what efforts are needed

Knowledge

Exchange knowledge

Identify differences to find ways to deal with it

Bring specific knowledge to discussion

Create a network to exchange knowledge to achieve best practices

Allows to identify lacks of specific knowledge

Allows to identify training needs

Aim of PT Example (final product)

Guidance document applicable to whole country, supported by the:

Identification of best practices already in place

New identified best practices to overcome gaps

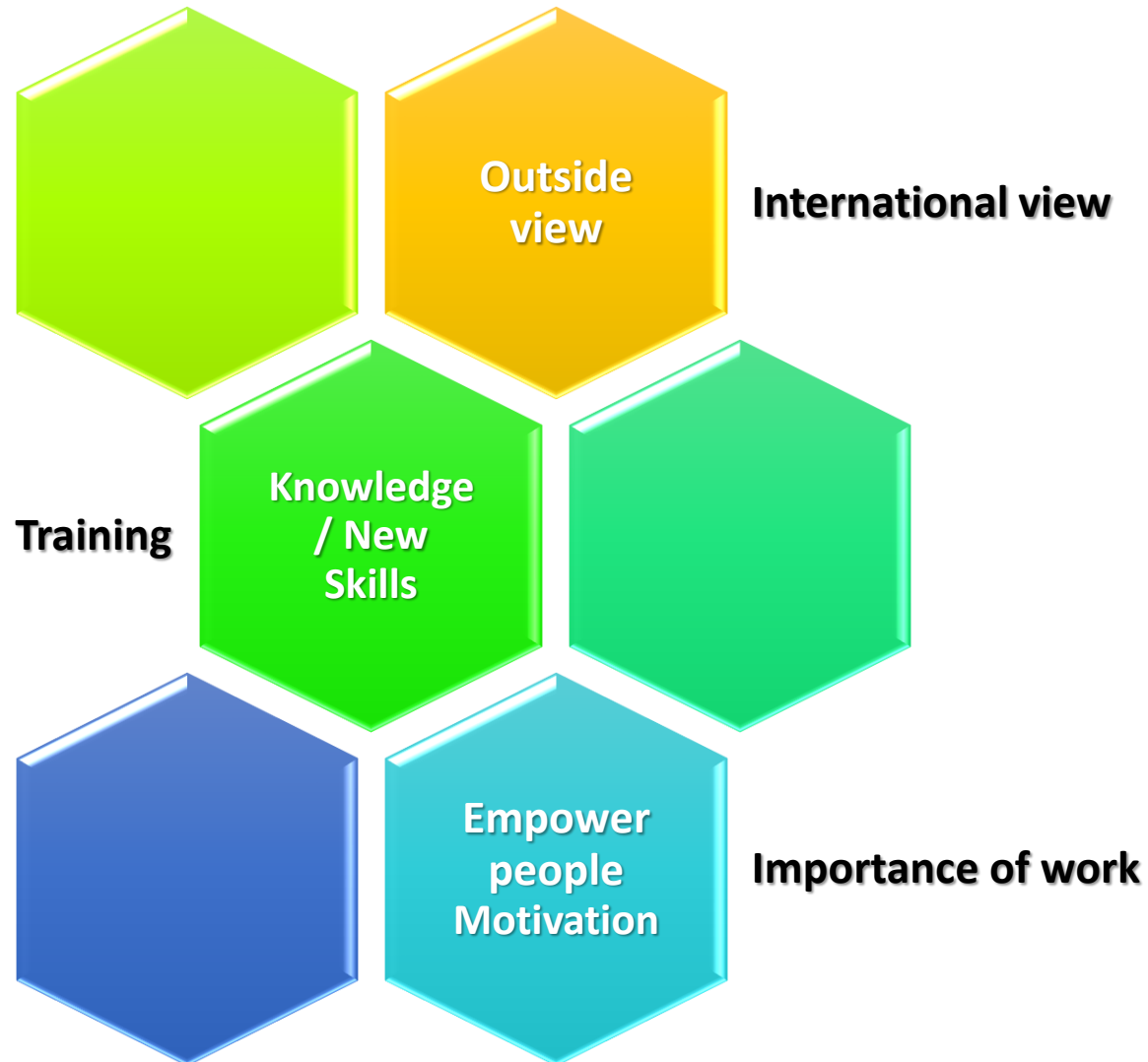
Legal needs from European directives and national legislation

HOW TO OVERCOME INTERNAL CHALLENGES



FROM IMPEL NPRI TEAM

TRAINING SESSION



- **NPRI methodology and annexes**
 - **Helps to define scope and procedures**
 - **Guides on the development of the framework assessment**
 - **Is a good and recognized base of work (IMPEL)**
 - **A guide to follow the roadmap**

Important to define (or find) the adequate network to implement a NPRI

Understand where there are challenges, where the process may be useful to overcome certain difficulties: Identify “the problem”

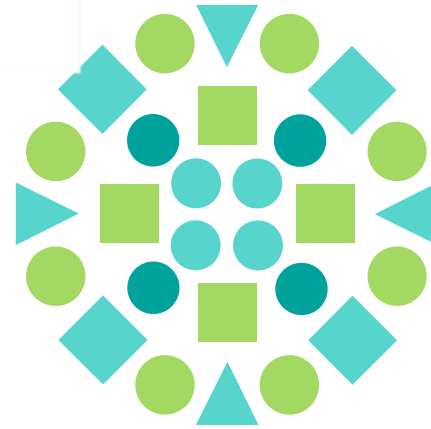
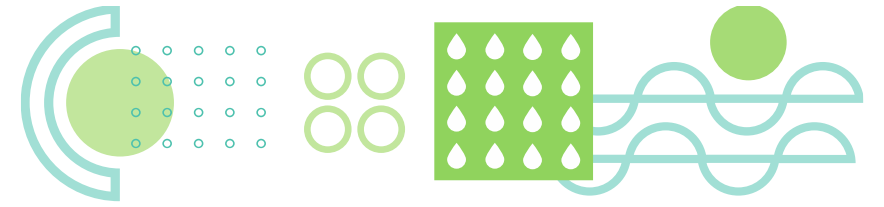
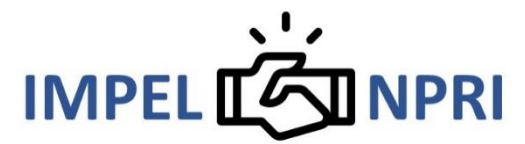
Good scooping (clear definition of the aim of the NPRI: what is expected and what is out of the purpose)

Good communication with the network and work team: Ensure always flexibility and a non-judgement process (all knowledge is valid)

Engage specific knowledge through working in network
Empower people to promote better environmental compliance



European Union Network for the
Implementation and Enforcement
of Environmental Law



Thank you

apambiente.pt

